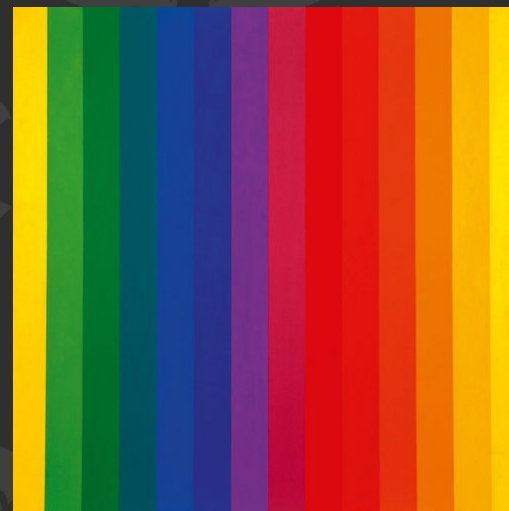
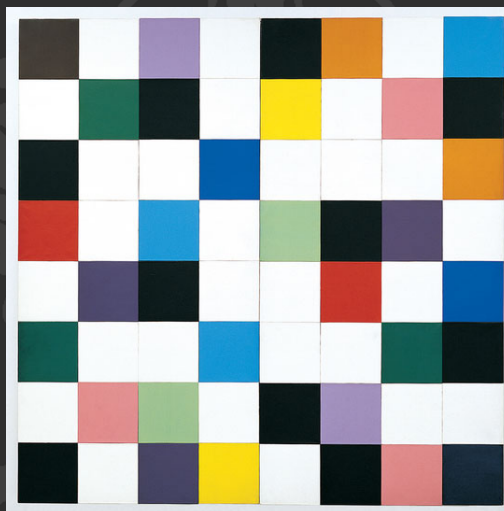
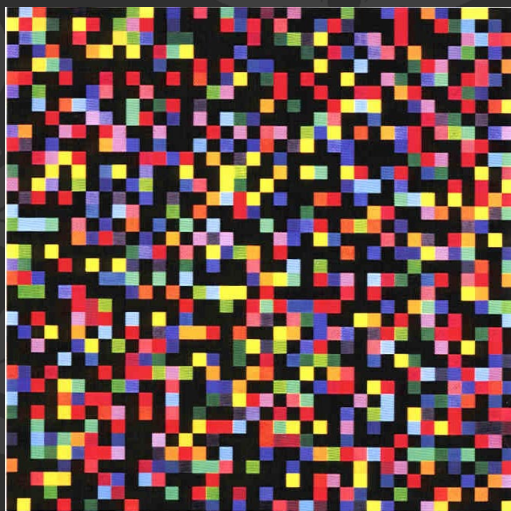
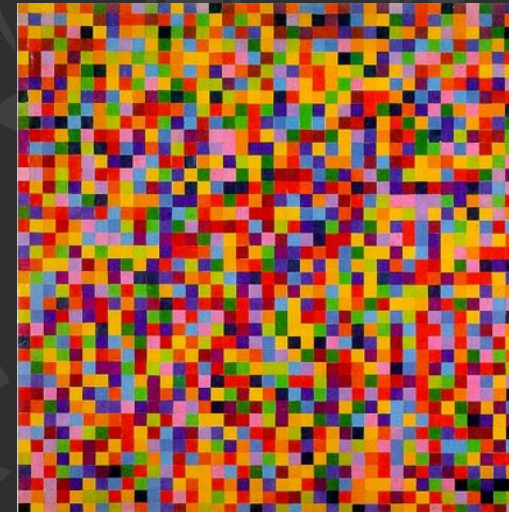


Modern Art Maths



Paintings by Ellsworth Kelly

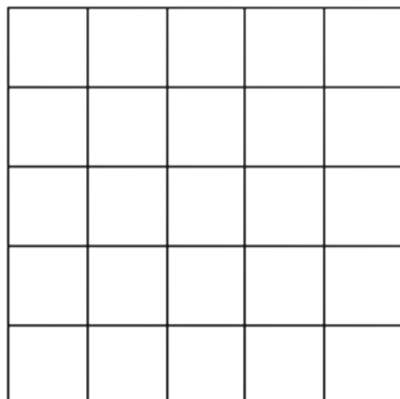


- Think about your design carefully and create your piece of modern art in the 100 square grid, using different colours.
- Can you work out the equivalent fractions, decimals and percentages for each colour in your piece of artwork?
- If you want a further challenge, use a grid with less than 100 squares. How can you work out the percentage of the grid coloured in?

Name

Colour	No. of squares	Fraction	Decimal	Percentage

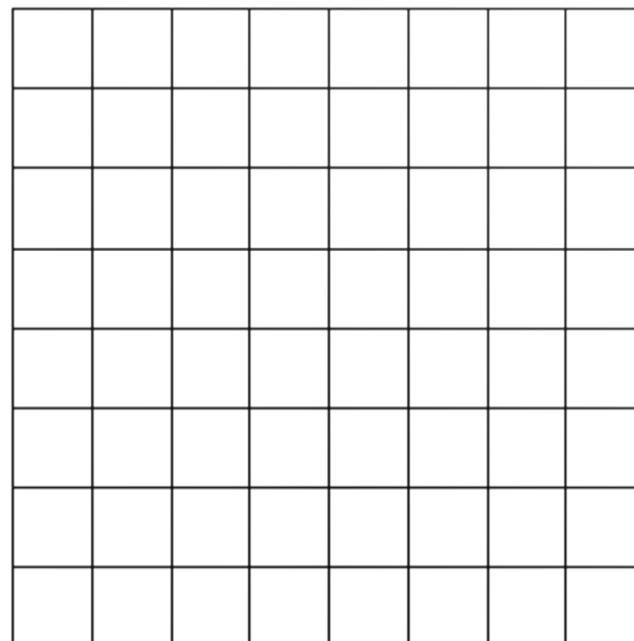
Extension 1



Name

Colour	No. of squares	Fraction	Decimal	Percentage

Extension 2



Name

Colour	No. of squares	Fraction	Decimal	Percentage

	No. of squares out of 100	Fraction	Decimal	Percentage	Equivalent amount in £
1	75	$\frac{3}{4}$	0.75	75%	£0.75
2		$\frac{1}{5}$	0.2		
3	30		0.3		
4		$\frac{12}{25}$		48%	
5	60				
6				37%	
7			0.56		
8	44				
9		$\frac{23}{25}$			
10		$\frac{7}{10}$			