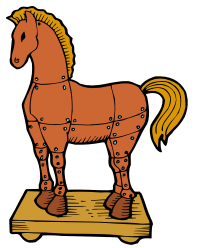


WALT

Identify the features of myths, legends and fables, e.g. the moral in a fable, fantastical beasts in legends; recognise how stories change over time and differences of culture and place that are expressed in stories; explore similarities and differences between oral and written story telling; and to write own versions of legends, myths and fables.



What is a myth? Features of Myths

Myths always include the following features:

- An interesting setting, for example an island, a mountain, a desert
- A fantastical beast, for example a unicorn or a flying horse or Greek mythical beast like Medusa
- A hero
- Objects to help the hero save the day, for example winged sandals, a shield, a sword
- Obstacles the hero has to complete/survive in order to rescue someone, for example return with the head of the beast, or collect the Golden Fleece.

Connectives

Time connectives include:

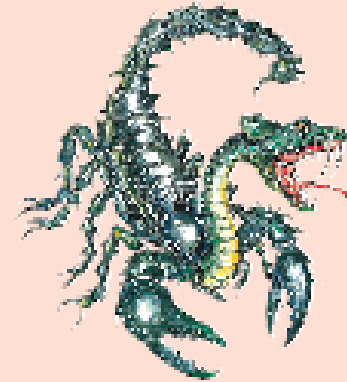
- When
- Whenever
- Later
- After a while
- Meanwhile
- Next
- Suddenly
- After that
- Moments later
- By this time
- That morning
- Days later

'Explanation' stories that seek to explain the origins of natural and supernatural phenomena, human/superhuman characteristics and the spiritual side of life. Examples include the Greek and Norse myths and the great Hindu myths (*The Ramayana*)



What will
you call your
hero?

Other connecting words and phrases to join sentences and link ideas include:



- But
- Although
- Despite
- Nevertheless
- However
- Until
- As
- In case
- Unless
- Therefore

Ideas for Characters



What will
your beast
look like and
what will their
powers be?

How will
your

Myth end?

Read through your work carefully.
Ask yourself these questions ...

Plot

Does the plot make sense?
Is it exciting?
Does anything need explaining more carefully?

Paragraphs

Have I used paragraphs to structure my story?
Have I used connecting words and phrases to show how paragraphs link?

Description

Have I chosen words and phrases carefully to help my reader imagine what I am describing?

Sentences

Have I punctuated all my sentences correctly?
Have I used a mixture of short and long sentences?
Have I used connecting words and phrases to link sentences together?

1 What are they called?	2 What do they look like?
3 What can they do?	4 What are their good points?
5 What are their faults?	6 Why do they want to solve the problem?

How to plan my Myth

