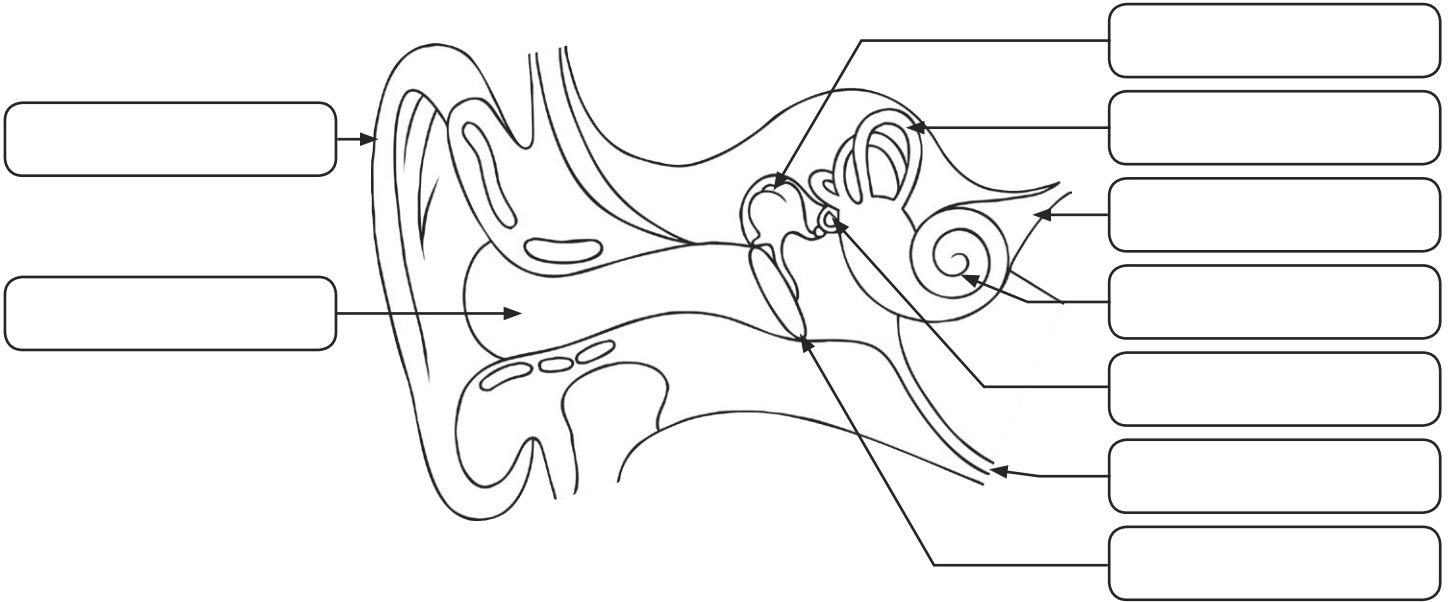


Name:	Class:	Date given:
		Date due in:

# The Human Ear



1a. Label the parts of the ear on the diagram above using the words from the box. [9]

cochlea	eardrum	semicircular canal	ear canal	pinna
auditory nerve	ossicles	Eustachian tube	oval window	

1b. Draw two vertical lines on the diagram below and label it to show how the ear can be divided into three sections. [4]



2. How does sound travel to our ears? [2]

---



---

3a. Which of these would sound travel through the fastest? Circle one [1]

solid      liquid      gas      vacuum

3b. Explain why. [2]

---



---

4. How does a damaged eardrum cause hearing loss? [2]

---



---

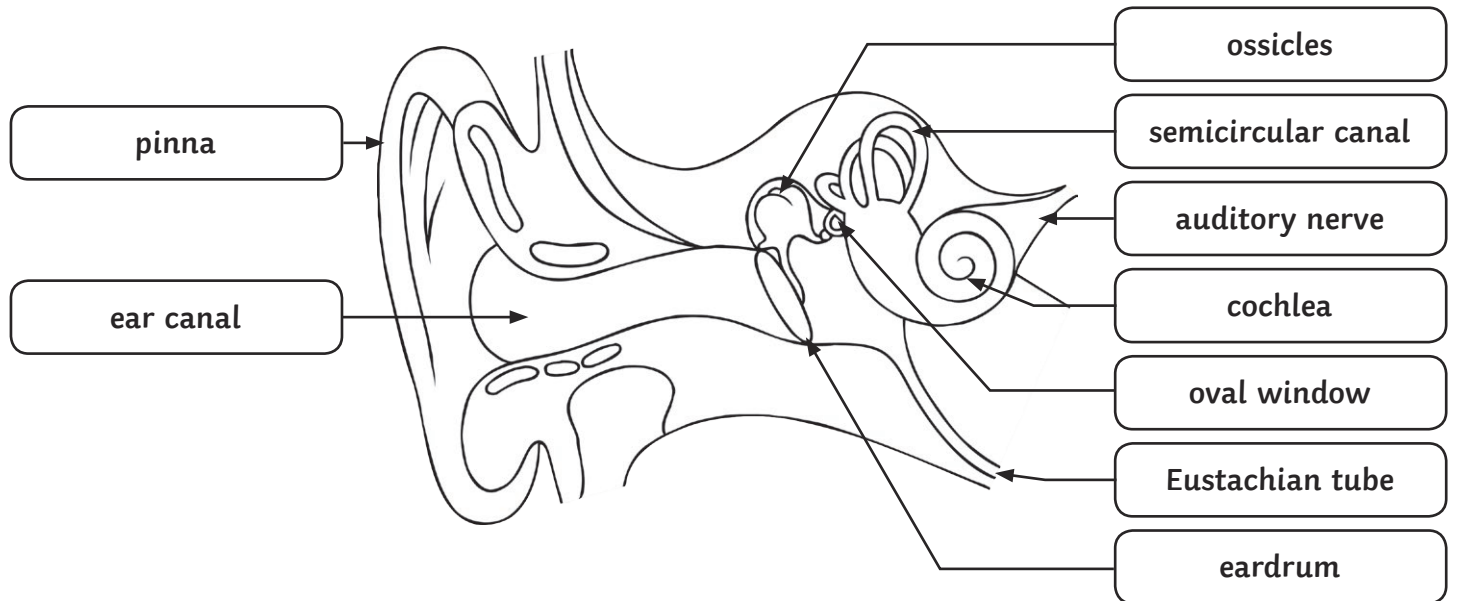


---

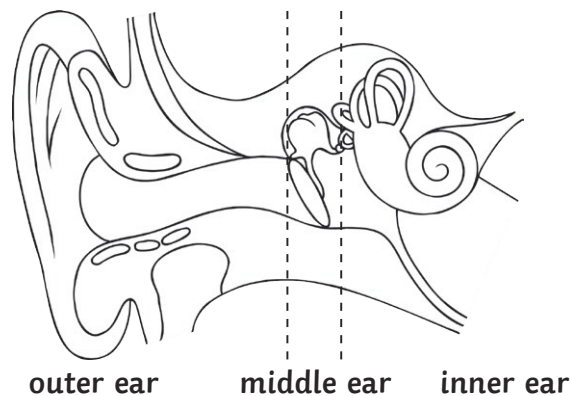
**Learning Outcomes** (tick if achieved)

Q1	I can describe the structure of the human ear	
Q2	I can describe how sound travels	
Q3	I know how sound is affected by different mediums	
Q4	I can describe how hearing can be impaired	

# The Human Ear Answers



- 1a. Label the parts of the ear on the diagram above using the words from the box. [9]
- 1b. Draw two vertical lines on the diagram below and label it to show how the ear can be divided into three sections. [4]



2. How does sound travel to our ears? [2]

**Through the vibration of particles - particles bump into one another and pass the vibration along.**

- 3a. Which of these would sound travel through the fastest? Circle one [1]

solid      liquid      gas      vacuum

- 3b. Explain why. [2]

**In a solid, the particles are more closely arranged so the vibration of particles is passed along more quickly.**

4. How does a damaged eardrum cause hearing loss? [2]

**The ear drum's function is to pass vibrations to ossicles (small bones). Damage to the eardrum affects the ability to pass vibrations along. A larger hole / damage causes more severe hearing loss.**