



Week 3 'wh-'

Monday is **Nounsday**

wherewithal

Tuesday is **Adjectiveday**

whitish

Wednesday is **Adverbday**

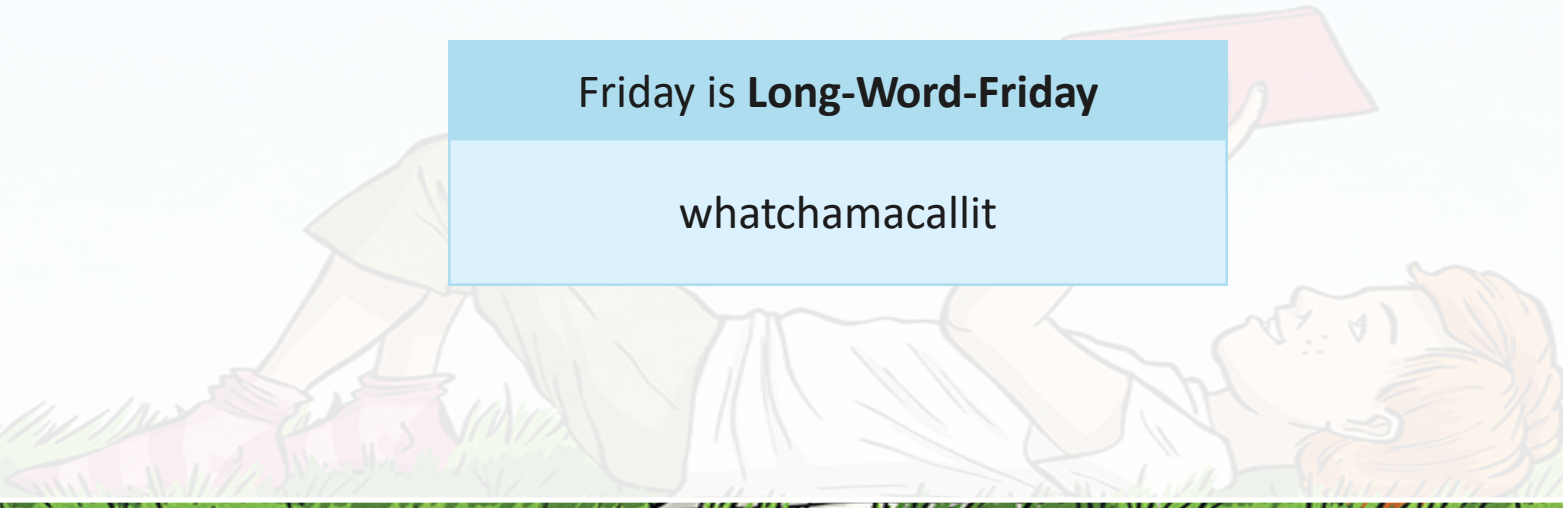
wholeheartedly

Thursday is **Verbsday**

whittling

Friday is **Long-Word-Friday**

whatchamacallit





FANBOYS

Write a sentence using the word and a
FANBOYS
co-ordinating conjunction.

Question Time

Write a question using the word.

wherewithal

Click on the
word for
the
definition.

Something that is needed for a particular
purpose.

Character Speech

Write a line of dialogue for a character
talking about wanting to go on holiday.

Alphabetical Arrangement

Arrange all the letters of the word in
alphabetical order.



New Word Neologism

Create some new words of your own using words you know already and adding the ending '-ish'. You'll also need to write the definitions.

List Lines

Write a list of things that could be described as 'whitish'.

whitish

Click on the word for the definition.

A colour that is nearly white.

Advert Adage

Write an advertising slogan for a product using this word.

You might use this word when describing the problem rather than the solution.

Word Families

Write down as many other words you can think of that end with '-ish', then work out what adding '-ish' means...



News Narration

Write and perform a radio or TV news story of no more than three sentences using this word.

Diary Date

Write a short diary entry of no more than three sentences using this word.

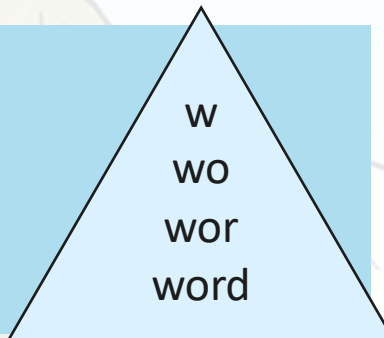
wholeheartedly

Click on the word for the definition.

In a way that is totally committed to something.

Pyramid Practice

Spell the word using a pyramid.



Sentence Scribe

Write a sentence using this word.



FANBOYS

Write a sentence using the word and a FANBOYS co-ordinating conjunction.

News Narration

Using the phrase 'whittling down' (in any of its tenses), write and perform a radio or TV news story of no more than 3 sentences using this word.

whittling

Click on the word for the definition.

Shaving or carving away at something (usually wood) to shape it into something.

It can also be used to talk about something that is getting smaller in the phrase 'whittling down'.

Dictionary Neighbours

Which words come before and after this word in the dictionary?

Tense Transform

Write the word in as many different tenses as you can.
Even better, write full sentences for each!



Diary Date

Write a short diary entry of no more than three sentences.

Describe and Scribe

Using this word, write a short paragraph describing an invention that has yet to have a name.

whatchamacallit

Click on the word for the definition.

Something of which you don't know the name. Synonyms include 'thingamajig' and 'whatsit'.

Super Long Word Alert

Just even saying it is an achievement!
Go on, have a go...

Character Speech

Write a line of dialogue for a character using this word.



Week 3 'wh-' Consolidate It

Create your own crossword using these words and writing the clues.

Monday is **Nounsday**

wherewithal

Tuesday is **Adjectiveday**

whitish

Wednesday is **Adverbday**

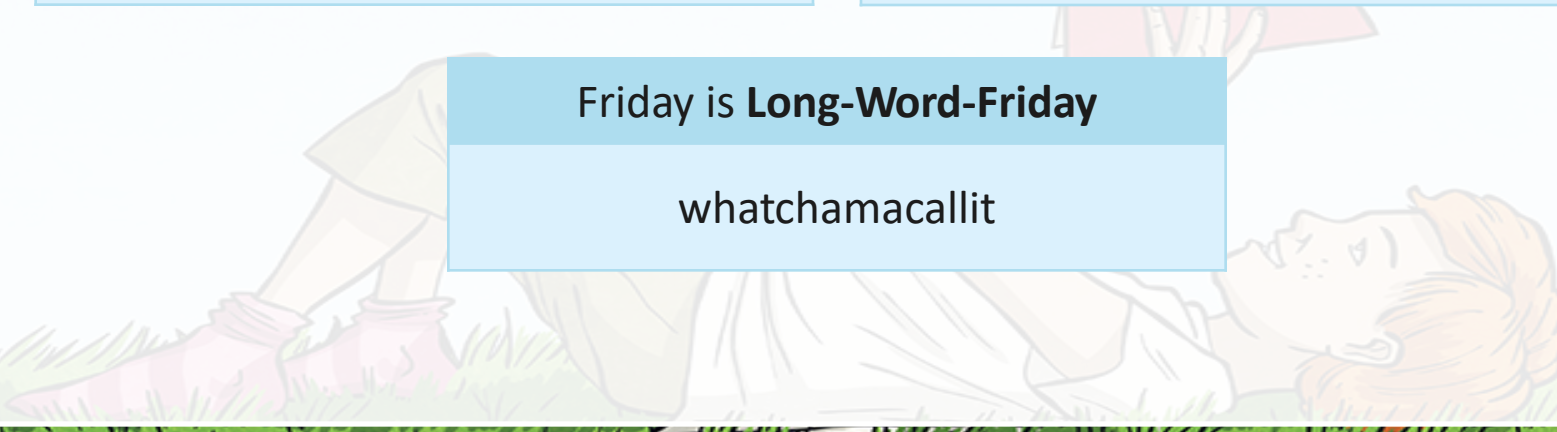
wholeheartedly

Thursday is **Verbsday**

whittling

Friday is **Long-Word-Friday**

whatchamacallit





Week 3 – Writing Task

Complete the play script using as many of the words of the week as you can.

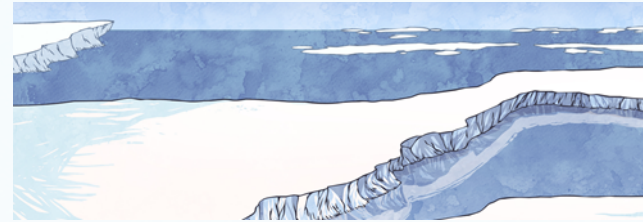
Scene 1

Two explorers are sitting on a ship bound for Antarctica discussing how to choose a third member of the crew to accompany them ashore on an expedition.

Explorer 1

(Decisively) So I think we need to decide who the candidates are...

Explorer 2



How many points can you score?

Word of the Week	Points
wholeheartedly	1
wherewithal	1
whatchamacallit	2
whitish	3
whittling	3

